

# TAYLOR 67" FREESTANDING RECTANGULAR TUB

Cat. No.  
ATCRECN67FIG-XX



Faucet not included

L: 66-1/4"  
W: 29"  
H: 23"

Water depth: 17-3/4" to top of tub  
Water depth: 14-1/2" to overflow  
Center of drain to back of rim: 9-1/2"  
Overflow hole diameter: 3" x 1/2"  
Bottom of drain to floor: 5-1/4"  
Bottom of tub wall to floor: 6-1/2"

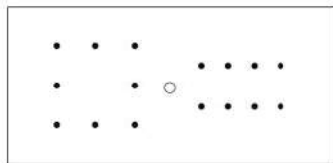
The following is recommended for  
ATCRECN67FIG:

- Faucet: part #7022, 7082, or 7088
- Rigid, freestanding supplies: part #4502
- Freestanding filler: part #7902 or 7934  
(Supplies included with filler)



For easier installation we  
recommend use of 5598-ITD  
Easy Install Rough In Kit

Gallon Capacity: 58  
Shipping Weight: 164 lbs.  
Empty Weight: 108 lbs.  
Filled Weight: 592 lbs.



(Air jet configuration if system is added,  
more info on page 2.)

## Features:

- Acrylic construction for lighter weight
- Sleek design compliments many decors
- Drain and overflow covers included (available in 7 finishes)
- Rim measurement 1-1/2"
- Overflow slot with integrated drain
- Drain included
- Angle slope of tub 30°
- No faucet holes
- Includes built-in adjusters
- Tub is thoroughly inspected before shipment
- IAMPO certified
- Option to add foam insulation between tub walls available
- **New:** Air jet sytem now available, more info on page 2

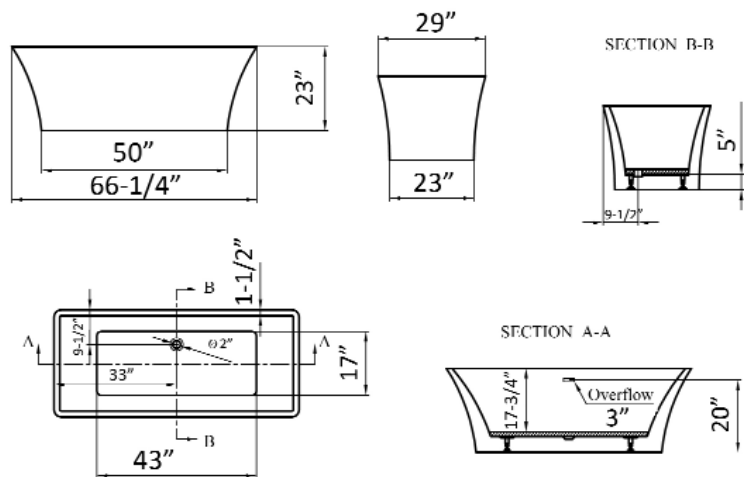


## Finishes:

- CP Polished Chrome
- BN Brushed Nickel
- ORB Oil Rubbed Bronze
- WT White
- PB Polished Brass
- PN Polished Nickel
- MB Matte Black

**Custom Colors Available** (inside of tub is always white enamel):

Painted bathtubs are considered "special order" and are not returnable  
\$160 Bisque or Black \$250 Designer Color



Dimensions of fixture are nominal and specifications subject to change without notice.

# BATHTUB AIR JET KIT

Cat. No.  
AIR KIT 1, AIR KIT 2



- A** AIR JET - Bottom air jets for maximum bubble action.
- B** BLOWER - The heart of the massage system.
- C** MANIFOLD - Double back flow security prevention device.
- D** FLEXIBLE PVC HOISING - IAPMO certified.
- E** MAIN AIR INTAKE HOSE - High temperature and pressure resistant.

**Air Kit is installed in tub before shipment**

## Features:

- ▶ 750 Watt blower motor operates system
- ▶ 300 Watt air heater warms air
- ▶ System powered by 120V
- ▶ 16 brass air jets placed in bottom of tub
- ▶ Each air jet has 24 holes
- ▶ Air jet caps available in white (AIR KIT 1) or black (AIR KIT 2)
- ▶ Includes 1¼" x 3' main air hose plus 1¼" x 9' extension hose
- ▶ Automatic system purge after each use
- ▶ Automatic safety timer turns off system after 20 minutes
- ▶ Includes water tight remote control
- ▶ Compatible with most acrylic, copper and resin tubs with no feet
- ▶ Not available with cast iron tubs or tubs with feet

## INSIDE TUB VIEW - WILL VARY BY TUB DESIGN

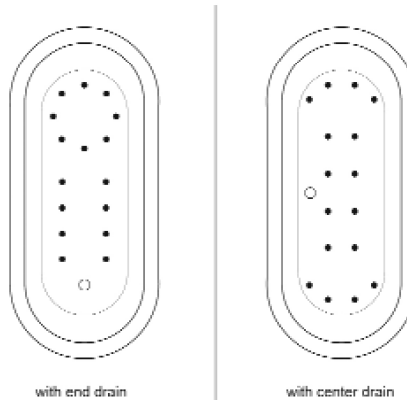


Air Jet

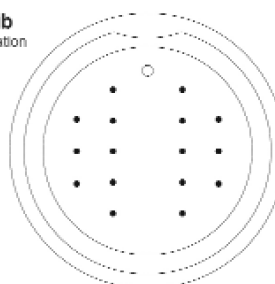


Remote

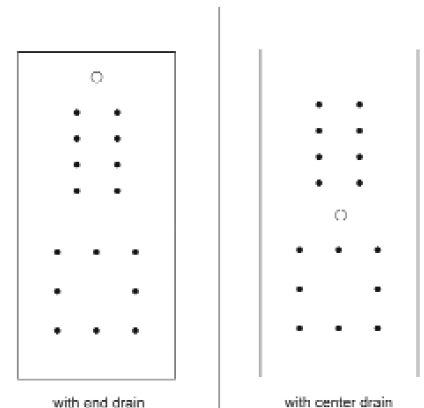
**Oval bathtub**  
Sample jet configuration



**Round bathtub**  
Sample jet configuration



**Rectangular bathtub**  
Sample jet configuration



These diagrams are general representations.  
Jet placement may vary dependent on tub shape

### Features:

(16) Maxi Air Jets



Elbows for air jets



Tees for air jets